



2025

PRINCESS S72

PÅ LAGER • S72531 • GBPYIF6055H425

VISNING COPENHAGEN, DENMARK

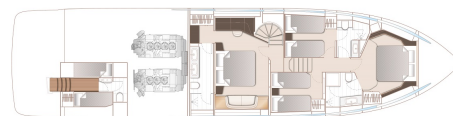
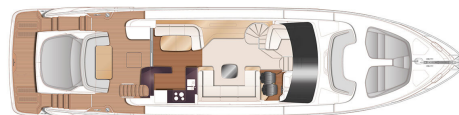
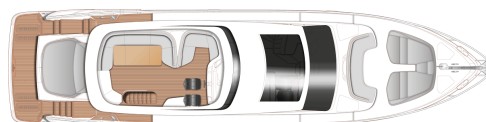
2X MAN V12 (2X 1800HP) - H

TOPPFART, CA 35KN

LENGDE 23.09 M X BREDDE 5.52 M

5 KABINER • 4 WC

SOLD



Princess Yachts West Sweden
+46 (0) 304 390 90
princessyachts.se

Princess Yachts Norway
+47 66 76 08 70
princessyachts.no

Princess Yachts Denmark
+45 70 26 84 84
princessyachts.dk

PROPULSION

Motorer	2x MAN V12
Motor	2x 1800 hp
Fart, ca	35 kn
Type	Inboard
Drifttype	Shaft
Drivstoff	diesel

DIMENSJONER

Lengde	23.09 m
Bredde	5.52 m
Dyppte, ca.	1.72 m
Weight, ca	55461 kg
Drivstoff	2x 4500 L
Vann	836 L
Septik	1x400 L

ANNEN

Produsent	Princess Yachts Limited
Designer	Olesinski
Båtkategori	power
Skrogform	Planing
Material	Fibreglass
El. system	24 V
Kabiner	5
WC	4

Ny 2025 årsmodell Princess S72 klar til levering.

ENGINES & DRIVE

Third station engine and thruster control in cockpit

HYDRAULICS

Hydraulic system consisting of separate engine driven hydraulic pumps allowing any system to be supplied with hydraulic power from either engine. Including hydraulic anchor winch and 320kgF hydraulic bow thruster (in place of standard) 240kgF stern thruster and hold function docking system. All with dual station controls

STABILISATION

Sleipner Vector Fin stabilisation system with VF800 fins. When underway fins are driven by an engine powered hydraulic motor and at zero speed by a generator powered electric motor. (NB Variable speed thruster(s) are recommended as fin and thruster controls are incorporated into one control at both helms (Recommended fitment of upgraded 27kW generator for this option)

HULL COLOUR

Engine air vent cover in white GRP with graduated vinyl fade to black. Deck house buttresses, cockpit headlining, styling undercut of radar arch and canopy forepeak finished in graphite grey metallic paint. Top side of radar arch in white GRP

White (with dark grey water line, black antifouling, hull & bathing platform fendering is white with stainless steel insert)

"Canopy graphic to canopy aft feature chamfer (note white gelcoat finish as standard) please choose one from selection below:

? Electric Blue"

INTERIOR FURNITURE

Galley lower units are in boat timber. Top lockers are in Taupe Grey laminate finish Walnut interior wood satin finish (galley, dinette and helm floors are V groove planked

walnut as standard)

Standard helm console is Grey with helm seats in leather

LAYOUT

Starboard cabin to have double berth conversion with powered sliding mechanism on inboard berth

Port cabin to have double berth conversion with powered sliding mechanism on inboard berth

"Flip up arm rests to lower helm and navigators seat (2 per seat)

Note: helm seat right arm rest incorporates chartplotter remote control"

GALLEY

Galley worktops, bar and cockpit servery finish is Sylmar white solid surface as standard.

BATHROOMS

Bathroom cabinets are finished in slate grey veneer as standard

Vanity tops are Sylmar White Solid Surface (satin finish) with thermoformed basins

Floors are Carrara White (satin finish) as standard

COLOUR SCHEME

Colour scheme can be selected from the Quartz VIII or Milan IX range of fabrics as standard

Scatter cushions and throws

OMIT STANDARD LINEOUT OF 'SEATING L-SHAPED SOFA BACKREST SURROUND' IN CIRRUS LEATHER AND IN PLACE SPECIFY PUTTY LEATHER QUARTZ III.

UPHOLSTERY TO SEAT BACK AND BASE CUSHIONS IN QUARTZ VIII FABRIC COLLECTION OUESSANT 37390334

HELM SEATS QUARTZ PEBBLE LEATHER MAIN FABRIC WITH QUARTZ PUTTY LEATHER SECONDARY. CONTRAST PIPING IN PUTTY LEATHER WITH COLOUR MATCHED STITCHING IN SERAFIL 08-326

2 x Cockpit Dedon Seax folding armchairs

DECK HARDWARE

Note: The Princess S72 has an up/down electro hydraulic transom platform with 550Kg SWL fitted as standard. (maximum recommended tender weight is 450kg)

Teak laid cockpit, sportbridge deck, transom platform and steps to sportsbridge are standard on this craft

Electrically operated sliding roof over forward saloon area (incorporating standard skylights with electric blinds)

Electrically operated sun awning (grey mesh) to aft end of cockpit overhang

Teak laid side decks and foredeck walkthrough

Remote control 4.1m telescopic passarelle with folding handrails

Side boarding gates to aft port and starboard side decks

Stainless steel Epsilon anchor in place of standard (50Kg)

Additional 40m of 12mm anchor chain to give a total of 100 metres

Teak coffee table for foredeck seating area (with fixing point)

Deck wash system, located in transom, foredeck and sportsbridge lockers

Plug in carbon pole transom shower and deck socket to bathing platform

Stainless steel keyway plates and chock mounting system on bathing platform for later fitting of wet bike

Top loading cool box unit to cockpit bar unit

L-shaped aft facing cockpit seat in place of port servery unit (Fabric selection to match

cockpit upholstery)

Chain counter for fwd windlass (per helm)

GENERATOR

Primary generator upgrade ONAN 27 kW/50Hz

ELECTRICAL

Continental 220v/240v sockets

"Power socket upgrade

- Upgrade single sockets in forward cabin to doubles (x2)
- Additional single socket with twin USB in port cabin
- Additional single socket with twin USB in starboard cabin
- Additional single socket in master stateroom
- Additional double socket in aft/crew cabin
- QI wire/less charging pad on sportsbridge helm
- QI wire/less charging pad aft of foredeck seating"

Underwater transom lights (4x Lumishore THX 803 full colour interfaced with Radar/Chartplotter MFDs)

Heated towel rail in bathroom (each – specify bathroom to be fitted) (Not available in crew bathroom)

Under floor heating in bathrooms (each – specify location, excludes shower areas) (Not available in crew bathroom)

Separate washing machine and condenser dryer machine located below stairs leading to Master Stateroom lobby (in place of standard washer/dryer)

"Interior lighting upgrade package

Additional fibre optics (to saloon & dining area) Additional LED strip lights to blind pelmets – to lower accommodation"

"Exterior lighting upgrade package

Included linear LED (xl) and fibre optic lighting to the cockpit pelmet and headlining and low level LED dock lighting (x28)"

Electric standard venetian blinds to all main deck windows, excludes patio door & helm area

Electric roman blinds in lieu of manual venetian blinds in master stateroom (does not include bathrooms)

Freshwater maker (190 litres/hour) with remote instrumentation and service/spares kit

CCTV cameras (2 x fixed cameras in engine room, 1 x pan/tilt camera in cockpit)

Wine cooler (18 bottle) in port saloon sideboard unit

(107386) 230V socket in garage

(107571) fit inverter for galley sockets, usb outlets and master stateroom tv

AUDIO VISUAL & COMMUNICATIONS

"STANDARDSYSTEM

Deck Saloon – 55?" LED TV and power lift mechanism Naim Uniti Atom audio system with Bluetooth, multi-zone streaming capability and dedicated app. Paired with Focal speakers (2) and subwoofer

Owners Stateroom – 55?" LED TV

Naim Uniti Atom audio system with Bluetooth, multi-zone streaming capability and dedicated app. Paired with Focal speakers (2)

Sportsbridge – Naim Uniti Atom audio system with Bluetooth, multi streaming capability and dedicated app. Paired with JL Audio waterproof speakers (2)

Cockpit seating area – Naim Uniti Atom audio system with Bluetooth, multi streaming capability and dedicated app. Paired with JL Audio waterproof speakers (2)

- On board Ethernet network and 4G internet capability
- On board WIFI network incorporating external WIFI and 3G/4G antenna for extended range. Enabling connectivity to onshore WIFI networks throughout the vessel. (Mobile internet connectivity requires an activated mobile data SIM card.) (Please note that SIM card is not supplied)"

Forward Cabin TV & Audio Package – 43" LED TV, Naim Uniti Atom audio system with Bluetooth, multi-zone streaming capability and dedicated app. Paired with Focal speakers (2)

Copex for later fitting of sat tv

2x Dummy KVH (TV6) dome (49cm dome)

NAVIGATION

"Standard navigation trustings:

Raymarine Axiom XLI 6 multifunction colour display (two at lower helm and one at upper helm) incorporating Radar/Chartplotter with GPS and 4kW SHD 48" digital colour open array scanner. Raymarine Evolution autopilot with rate gyro with p70Rs control heads and i70s multifunction instruments (for speed, distance, trip, depth alarm, water temp etc) also fitted at both helms"

15" Boning display at each helm dedicated to Boning system, integrated with the following functionalities:

- Engine instrumentation (including fuel levels and fuel flow)
- Digital heat alarms
- Lighting controls
- AC/DC control & monitoring
- CCTV camera display"

Additional Raymarine Axiom XLI 6 colour multifunction display at upper helm

Raymarine Ray90 Multi Station VHF

Raymarine AIS Class B transponder interfaced with chartplotter

Stern camera

Port side camera facing aft

AIRCONDITIONING

"Reverse cycle air conditioning/heating (split gas system, not chilled water): 128,000 BTU – Suitable for ambient temperatures up to 40°C (tropical specification) With controls in all cabins and outlets in all areas (includes outlets in bathrooms and crew cabin)

Recommended generator : standard 22.5kW generator is suitable (NB. This has sufficient capacity for Gyro stabilisers as well as air conditioning)"

Windscreen demist system using warm air heater powered from calorifier

MOSQUITO SCREENS

Mosquito screens for all opening portholes

EXTERIOR UPHOLSTERY / CANVAS / COVERS

Foredeck, cockpit & sportsbridge seating with no contrast. Sunbed cushions with contrast insert in Comfort Exterior III Vogue with Vogue/Met or Hitch contrast

Fit reticulated foam to all standard exterior cockpit, foredeck, and sportsbridge seating/sunpads in place of standard (to improve drainage, excludes helm seats)

Cockpit, foredeck and sportsbridge covers

Separate covers for foredeck table, cockpit sofas and sunbed

Bimini top – Grey canvas

Windows in cockpit cover

Additional charge for Bimini top to have LED overhead lighting (switched from console)

Additional charge for Bimini to be electro-hydraulically powered

ACCESSORIES

8 place setting of China, Cutlery & Glasses are supplied as standard

SEA DELIVERY, SHIPPING AND DELIVERY

Inspection and shipping preparation in Plymouth / PDI (Pre Delivery Inspection)

This craft will be filled with fuel prior to despatch in Plymouth (4,500 litres)

Informasjonen på denne båten er gitt i god tro og antas å være nøyaktig, men kan ikke garanteres. En kjøper, eller hans inspektør, bør undersøke slike detaljer og betingelser som kjøperen ønsker å validere. Vi forbeholder oss retten til å gjøre endringer eller at båten ikke lenger er til salgs.



Princess Yachts West Sweden
+46 (0) 304 390 90
princessyachts.se

Princess Yachts Norway
+47 66 76 08 70
princessyachts.no

Princess Yachts Denmark
+45 70 26 84 84
princessyachts.dk